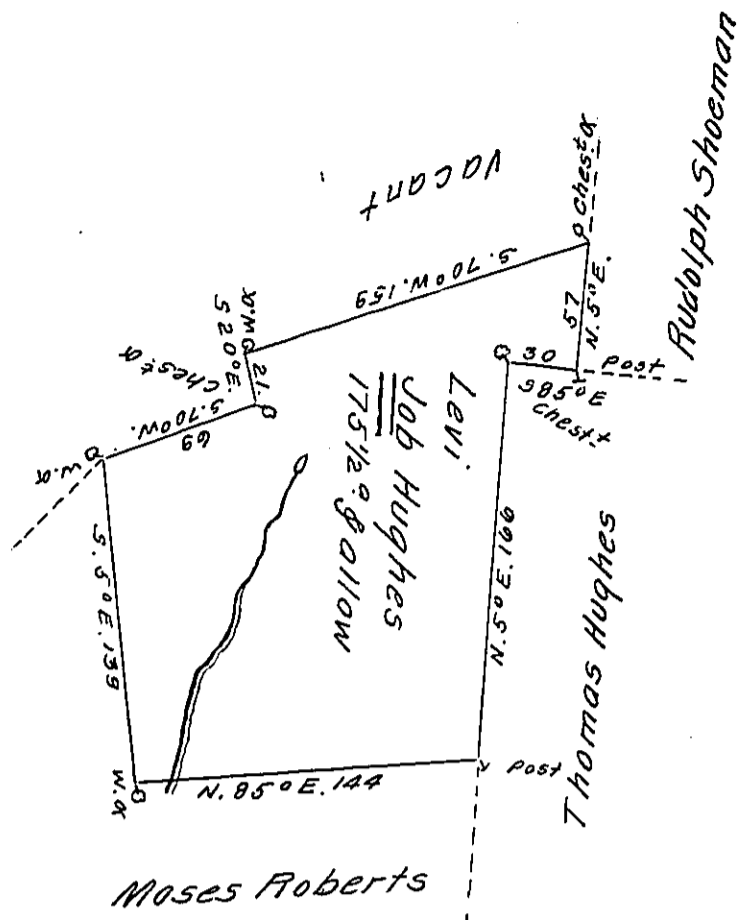


in Catawissey Top



See the order of the Board of the 26th May 1794 ordering the name of Levi to be inserted instead of Job.

J.B.

A Draught of a Tract of Land called — Situate on the Southerly side of the North East Branch of Susq^a River above Catawassey adjoining lands of Moses Roberts & others in the County of Northumberland. Containing One hundred and Seventy five Acres and a half besides the usual allowance for high Ways & ^{Levi} Surveyed the 10th day of October 1775 for Job Hughes in pursu- ^{Jan^y} ~~ance~~ of a Warrant dated the 5th day of ~~Nov~~ 1774.

by

Cha^s Stewart Dep. Sur^r

To John Lukens Esq^r Survey^r Gen^l

IN TESTIMONY that the above is a copy of the original remaining on file in the Department of Internal Affairs of Pennsylvania, made conformably to an Act of Assembly approved the 16th day of February, 1833, I have hereunto set my Hand and caused the Seal of said Department to be affixed at Harrisburg, this sixteenth day of March 1911.

Henry Houck

Secretary of Internal Affairs.